



**EDC**  
ECONOMIC DEVELOPMENT  
CORPORATION  
**EDC**  
City of Rice, Texas

**Rice Community Economic Development Corporation  
Downtown Greenspace & Property Development**

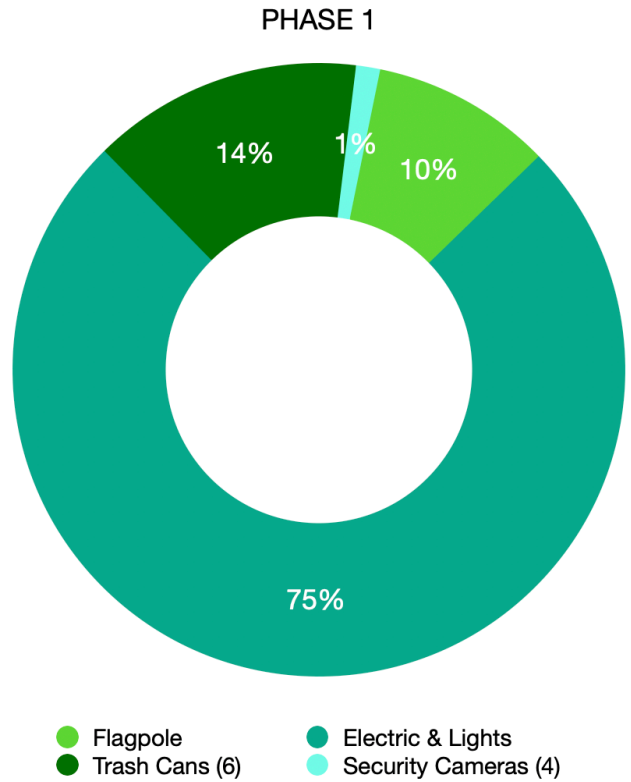


# PROJECT BUDGET

| MONEY IN            |                 |
|---------------------|-----------------|
| Budget Allowance    | \$31,488        |
| Grants              | N/A             |
| Sponsors/Donors     | N/A             |
| <b>Total income</b> | <b>\$31,488</b> |

| PHASE 1 COSTS         |                 |
|-----------------------|-----------------|
| Flagpole              | \$3,000         |
| Electric & Lights     | \$23,588        |
| Trash Cans (6)        | \$4,500         |
| Security Cameras (4)  | \$400           |
| <b>Total expenses</b> | <b>\$31,488</b> |

| Project Balance       |     |
|-----------------------|-----|
| Income minus expenses | \$0 |



## Phase 1 will be entirely funded by the Rice Community EDC

### Local Government Code

Sec. 505.152. PROJECTS RELATED TO RECREATIONAL OR COMMUNITY FACILITIES. For purposes of this chapter, "project" includes land, buildings, equipment, facilities, and improvements found by the board of directors to be required or suitable for use for professional and amateur sports, including children's sports, athletic, entertainment, tourist, convention, and public park purposes and events, including stadiums, ball parks, auditoriums, amphitheatres, concert halls, parks and park facilities, open space improvements, museums, exhibition facilities, and related store, restaurant, concession, and automobile parking facilities, related area transportation facilities, and related roads, streets, and water and sewer facilities, and other related improvements that enhance any of the items described by this section.

Added by Acts 2007, 80th Leg., R.S., Ch. 885 (H.B. 2278), Sec. 3.01, eff. April 1, 2009

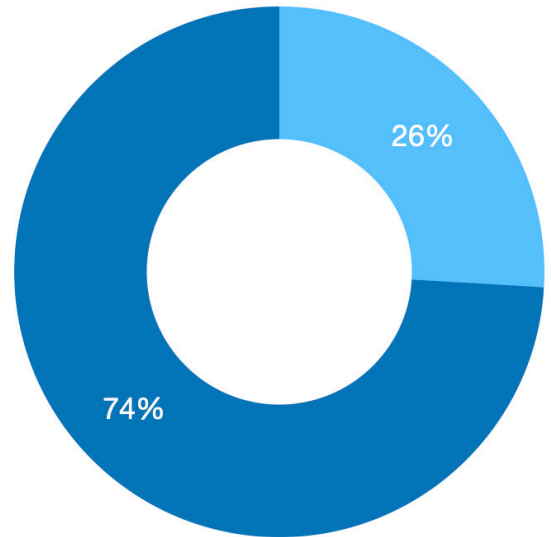
Funding for all remaining phases and their associated costs will be provided through grants, sponsors, and future budget dollars.

| MONEY IN            |            |
|---------------------|------------|
| Budget Allowance    | \$0        |
| Grants              | \$0        |
| Sponsors/Donors     | \$0        |
| <b>Total income</b> | <b>\$0</b> |

| PHASE 2 COSTS                         |                 |
|---------------------------------------|-----------------|
| Entrance Arch (concrete/stone & iron) | \$7,000         |
| Walking Path (concrete)               | \$20,000        |
| <b>Total expenses</b>                 | <b>\$27,000</b> |

| Project Balance       |           |
|-----------------------|-----------|
| Income minus expenses | -\$27,000 |

### PHASE 2



- Entrance Arch (concrete/stone & iron)
- Walking Path (concrete)

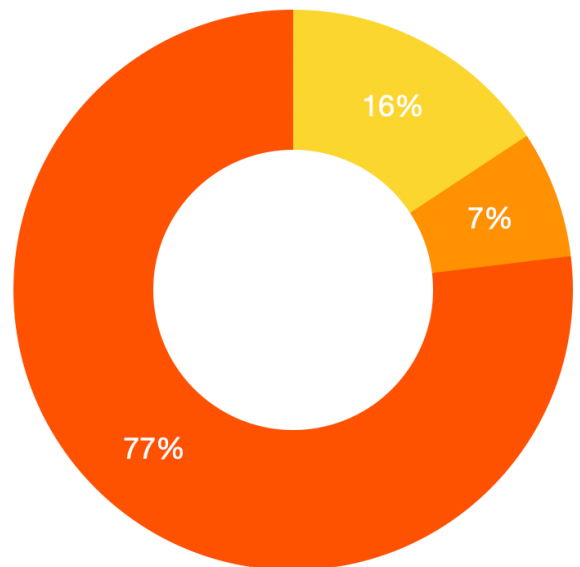
## PHASE 3

| MONEY IN            |            |
|---------------------|------------|
| Budget Allowance    | \$0        |
| Grants              | \$0        |
| Sponsors/Donors     | \$0        |
| <b>Total income</b> | <b>\$0</b> |

| PHASE 3 COSTS                      |                 |
|------------------------------------|-----------------|
| Park Benches                       | \$4,500         |
| Tree Removal                       | \$2,100         |
| Pavilion (red iron + installation) | \$22,000        |
| <b>Total expenses</b>              | <b>\$28,600</b> |

| Project Balance       |           |
|-----------------------|-----------|
| Income minus expenses | -\$28,600 |

### PHASE 3



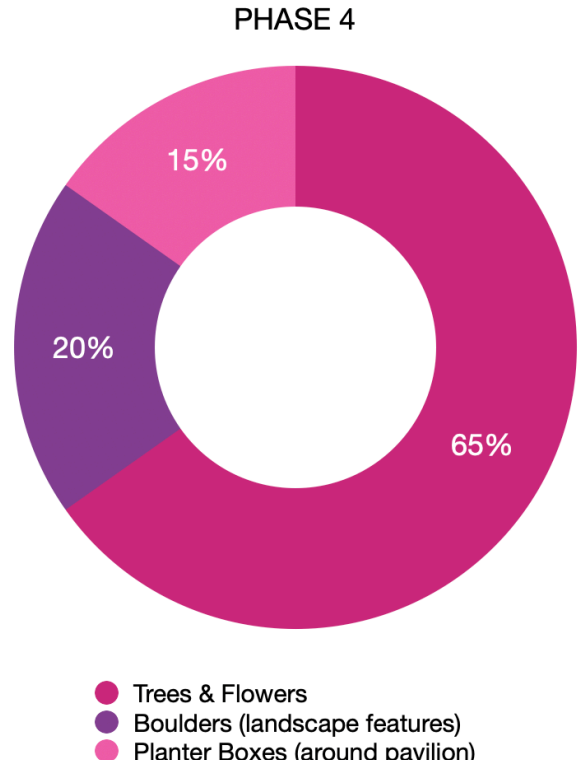
- Park Benches
- Tree Removal
- Pavilion (red iron + installation)

# PHASE 4

| MONEY IN            |            |
|---------------------|------------|
| Budget Allowance    | \$0        |
| Grants              | \$0        |
| Sponsors/Donors     | \$0        |
| <b>Total income</b> | <b>\$0</b> |

| PHASE 4 COSTS                   |                |
|---------------------------------|----------------|
| Trees & Flowers                 | \$3,000        |
| Boulders (landscape features)   | \$900          |
| Planter Boxes (around pavilion) | \$700          |
| <b>Total expenses</b>           | <b>\$4,600</b> |

| Project Balance       |          |
|-----------------------|----------|
| Income minus expenses | -\$4,600 |

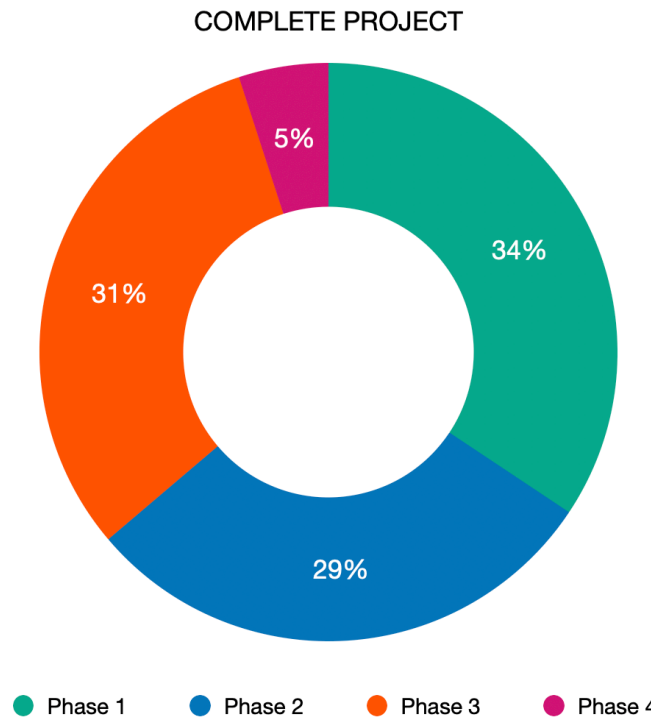


# PROJECT TOTAL (ALL PHASES)

| MONEY IN            |                 |
|---------------------|-----------------|
| Budget Allowance    | \$31,488        |
| Grants              | N/A             |
| Sponsors/Donors     | N/A             |
| <b>Total income</b> | <b>\$31,488</b> |

| COMPLETE PROJECT COSTS |                 |
|------------------------|-----------------|
| Phase 1                | \$31,488        |
| Phase 2                | \$27,000        |
| Phase 3                | \$28,600        |
| Phase 4                | \$4,600         |
| <b>Total expenses</b>  | <b>\$91,688</b> |

| Project Balance       |           |
|-----------------------|-----------|
| Income minus expenses | -\$60,200 |



# MEASUREMENTS

———— EDC Property Line

H  
1'


5'

10'

---

## SITE PLAN KEY


 Trash Can

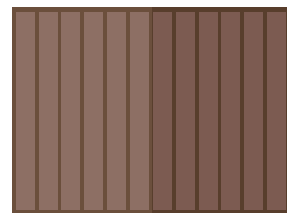
 Flagpole - 30' tall

 Historic Park Lights - 12' tall


 4' Path/Sidewalk  
▪ Concrete or Decomposed Granite

 Arch/Entrance

 Park Bench

 30' x 40' Pavilion  
▪ Wood Posts/Metal Roof  
▪ Concrete Base

 Tree

 Landscape Feature  
(currently Farmer's Market sign)

 Planter Box

 Tall Juniper  
or similar

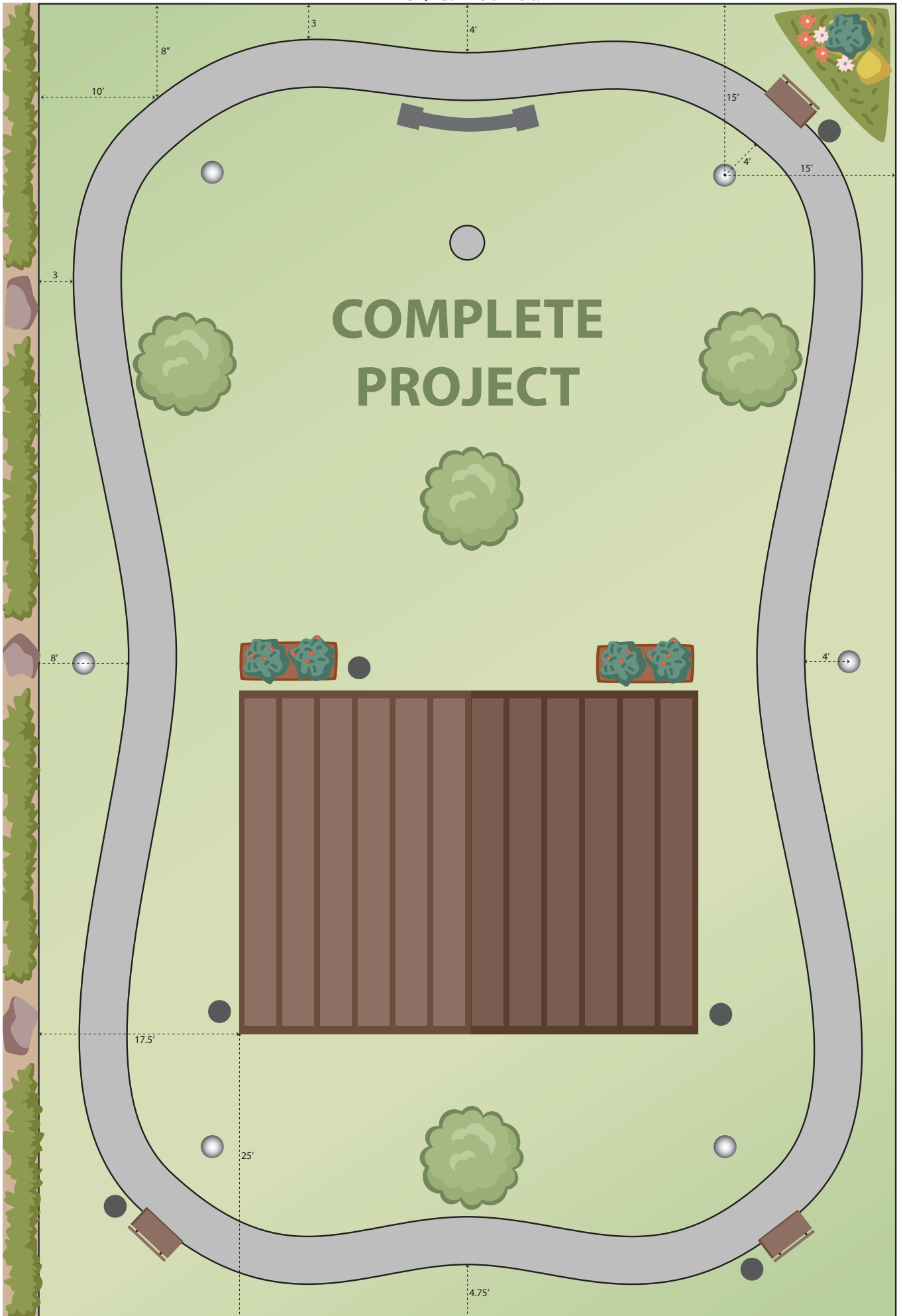
 Boulder

75' / Calhoun St.

Estrada Property

115' / Dallas St.

COMPLETE  
PROJECT



75' / Calhoun St.



ALLEY/EASEMENT

POLLAN FAMILY

**FUTURE  
DEVELOPMENT**

115' / Dallas St.