



Rice Community Economic Development Corporation Downtown Property Development

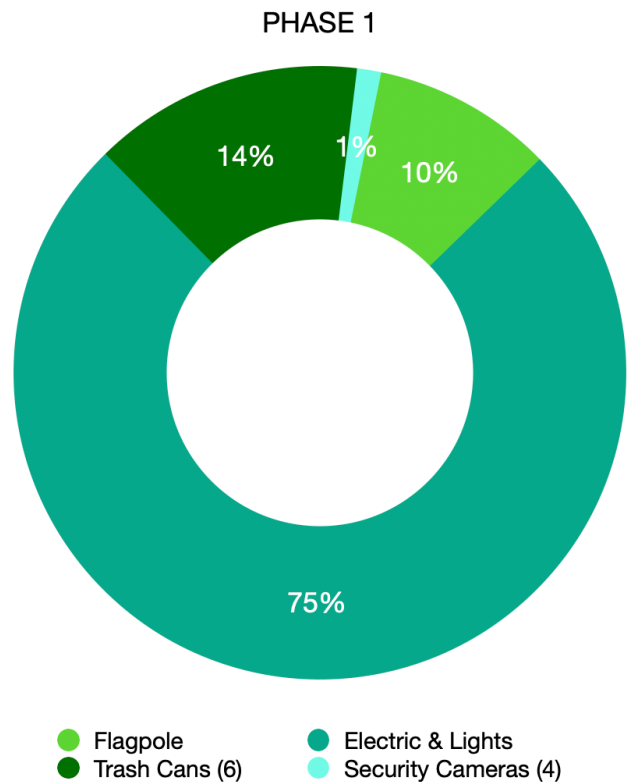
PROJECT PLAN : JUNE 2, 2025

BUDGET: PHASE 1

MONEY IN	
Budget Allowance	\$31,488
Grants	N/A
Sponsors/Donors	N/A
Total income	\$31,488

PHASE 1 COSTS	
Flagpole	\$3,000
Electric & Lights	\$23,588
Trash Cans (6)	\$4,500
Security Cameras (4)	\$400
Total expenses	\$31,488

Project Balance	
Income minus expenses	\$0



Phase 1 will be entirely funded by the Rice Community EDC

Local Government Code

Sec. 505.152. PROJECTS RELATED TO RECREATIONAL OR COMMUNITY FACILITIES. For purposes of this chapter, "project" includes land, buildings, equipment, facilities, and improvements found by the board of directors to be required or suitable for use for professional and amateur sports, including children's sports, athletic, entertainment, tourist, convention, and public park purposes and events, including stadiums, ball parks, auditoriums, amphitheaters, concert halls, parks and park facilities, open space improvements, museums, exhibition facilities, and related store, restaurant, concession, and automobile parking facilities, related area transportation facilities, and related roads, streets, and water and sewer facilities, and other related improvements that enhance any of the items described by this section.

Added by Acts 2007, 80th Leg., R.S., Ch. 885 (H.B. 2278), Sec. 3.01, eff. April 1, 2009

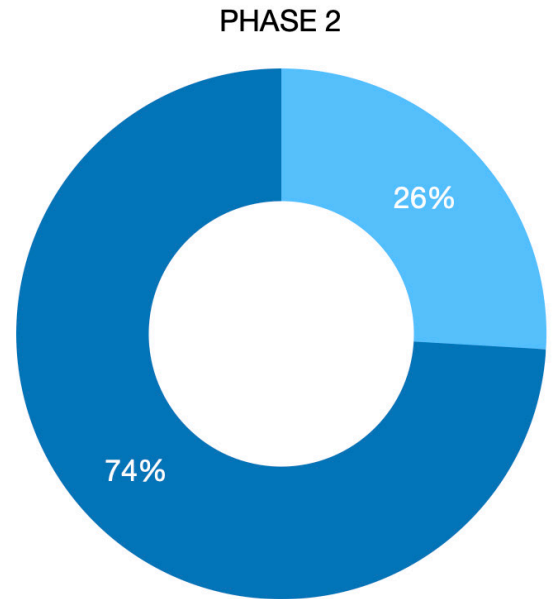
Funding for all remaining phases and their associated costs will be provided through grants, sponsors, and future budget dollars.

PHASE 2

MONEY IN	
Budget Allowance	\$0
Grants	\$0
Sponsors/Donors	\$0
Total income	\$0

PHASE 2 COSTS	
Entrance Arch (concrete/stone & iron)	\$7,000
Walking Path (concrete)	\$20,000
Total expenses	\$27,000

Project Balance	
Income minus expenses	-\$27,000



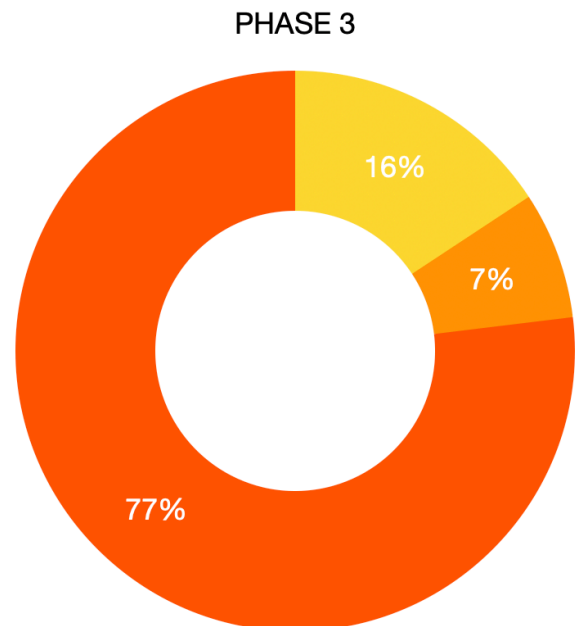
- Entrance Arch (concrete/stone & iron)
- Walking Path (concrete)

PHASE 3

MONEY IN	
Budget Allowance	\$0
Grants	\$0
Sponsors/Donors	\$0
Total income	\$0

PHASE 3 COSTS	
Park Benches	\$4,500
Tree Removal	\$2,100
Pavilion (red iron + installation)	\$22,000
Total expenses	\$28,600

Project Balance	
Income minus expenses	-\$28,600



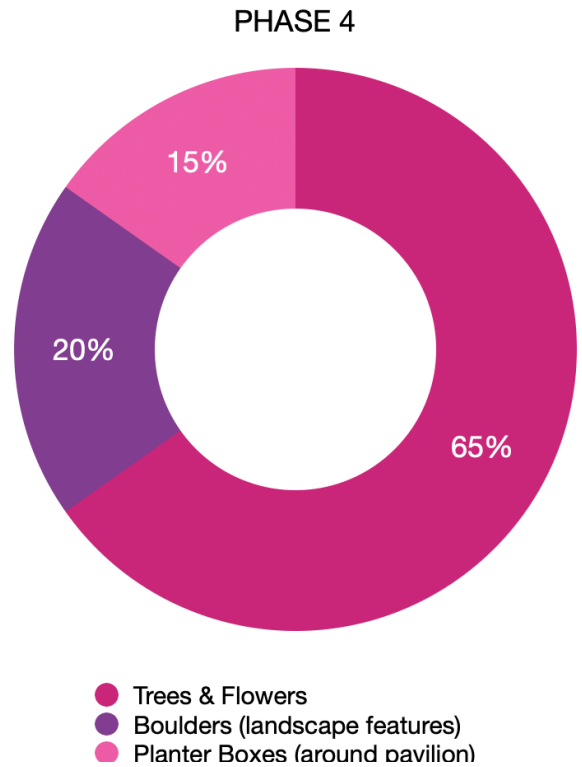
- Park Benches
- Tree Removal
- Pavilion (red iron + installation)

PHASE 4

MONEY IN	
Budget Allowance	\$0
Grants	\$0
Sponsors/Donors	\$0
Total income	\$0

PHASE 4 COSTS	
Trees & Flowers	\$3,000
Boulders (landscape features)	\$900
Planter Boxes (around pavilion)	\$700
Total expenses	\$4,600

Project Balance	
Income minus expenses	-\$4,600

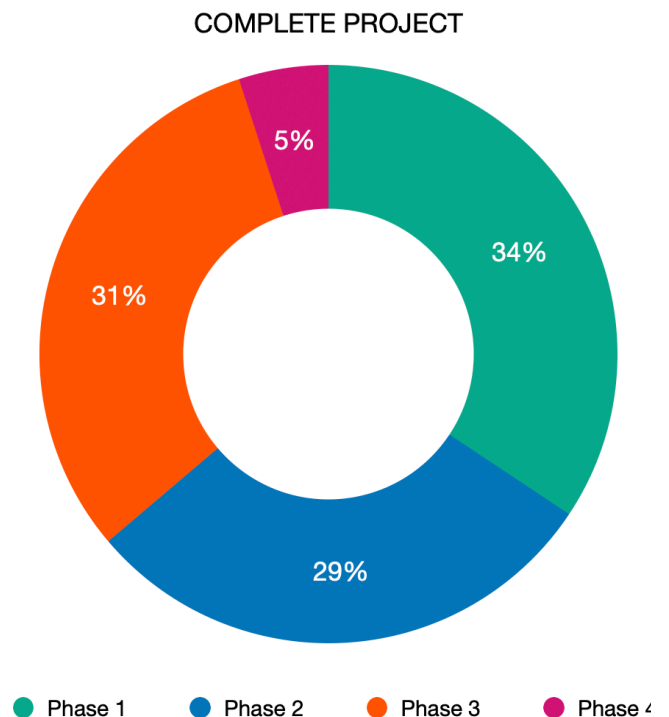


PROJECT TOTAL (ALL PHASES)

MONEY IN	
Budget Allowance	\$31,488
Grants	N/A
Sponsors/Donors	N/A
Total income	\$31,488

COMPLETE PROJECT COSTS	
Phase 1	\$31,488
Phase 2	\$27,000
Phase 3	\$28,600
Phase 4	\$4,600
Total expenses	\$91,688

Project Balance	
Income minus expenses	-\$60,200



COST BREAKDOWN WITH REFERENCES

Downtown Park Project				
Phase One	Electric work			
		A&M	\$87,542.85	
		County Electric	\$23,588.00	run lines, concrete & light install
		Saucedo & Sons	\$7,633.10	run lines & installation, Does not include 6 lights or concrete work
	Lovett Electrical Service	\$8,600.00		
				Lights: solar- 30W- \$770, 36w - \$942, either option pole separate- 12' pole \$904
				Wired options AGB2A- \$1325.00, AG- \$1155.00
		JLD construction	\$8,100.00	Concrete for light poles
		Padierna Concrete	\$7,500.00	
	Trash cans		\$500-\$1000	https://trashcansunlimited.com/40-gallon-covington-metal-city-trash-can-cov40p-ft-6-colors-5-lid-styles/
	Security cameras	\$99.99 ea. X 4	\$400.00	https://www.amazon.com/SEHMUA-Security-Cameras-Wireless-Outdoor/dp/B0CKW5WK3X?source=ps-sl-shoppingads-lpcontext&ref=fplfs&smid=A309BI798884RP&gPromoCode=169667479851453027408&qT=1&gRefinements=FEATU%3AWireless&th=1
	Flagpole	\$3,000.00		Complete
Phase Two	Path/sidewalk			
		JLD Construction	\$19,750.00	
		JCP Construction		
		Padierna Concrete	\$12,920.00	
		Craftex Construction		
		Crushed Granite	\$5,000.00	Will still need to be hauled from yard.
	Entrance Arch			
Phase Three	Benches			
	Pavilion		\$4,500.00	https://www.globalindustrial.com/p/6-ft-aluminum-park-bench-with-backrest-black
		Texwin	\$16,200.00	
		Mueller	\$17,536.49	
		Buffalo Ridge		Contractors to install red metal pavilion
		Mach Construction	\$11,100.00	On concrete piers
	Tree Removal	Kickin' Roots	\$2,100.00	
Phase Four	Trees			
			\$3,000.00	https://majortreefarm.com
Planter Boxes				
		Tree surrounds \$67.95 ea.		https://www.vegogarden.com/collections/classic-metal-raised-garden-beds/products/tree-surround-watering-ring-kit
		Metal planter \$159.95 ea.		https://www.vegogarden.com/products/vego-garden-6-in-1-modular-raised-garden-bed-kit?variant=40229600591907
Rocks			\$900.00	https://texscapenursery.com/garden-store-ennis-tx/bulk-materials/



Rice Community Economic Development Corporation Downtown Property Development

SITE PLAN



EDC Property Site Plan Key

—— EDC Property Line

MEASUREMENTS

H
1'

5'

10'

PHASE I

● Trash Can

○ Flagpole - 30' tall

■ Solar Light - 12' tall

● Electrical Pole

PHASE II

■ 4' Path/Sidewalk
▪ Concrete or Decomposed Granite

⤿ Arch/Entrance

PHASE III

■ Park Bench

■ 30' x 40' Pavilion
▪ Wood Posts/Metal Roof
▪ Concrete Base

PHASE IV

■ Tree

■ Planter Box

■ Boulder

■ Landscape Feature
(currently Farmer's Market sign)

■ Tall Juniper
or similar

Additional Items for Phases (not illustrated):

- 1) Security Cameras
- 2) Run Electrical (contingent on pavilion)
- 3) Picnic Benches under Pavilion & Speakers

75' / Calhoun St.

Existing Farmer's
Market Sign to be
Removed

PHASE I

Existing Tree
to be Removed
before Phase 3

115' / Dallas St.

Estrada Property

75' / Calhoun St.

Estrada Property

115' / Dallas St.

COMPLETE
PROJECT

